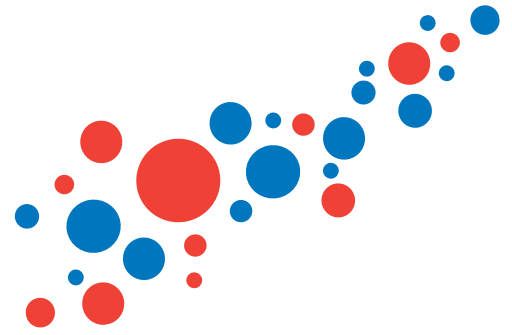
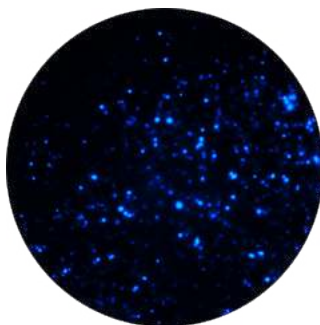
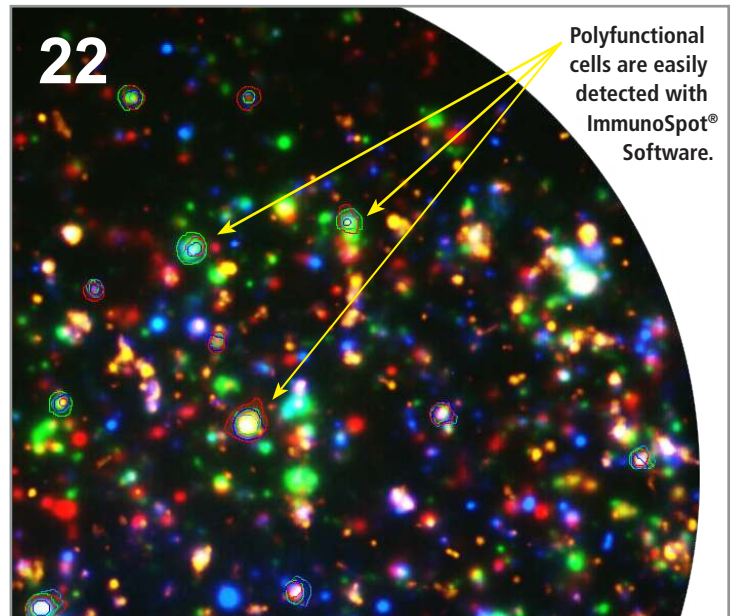
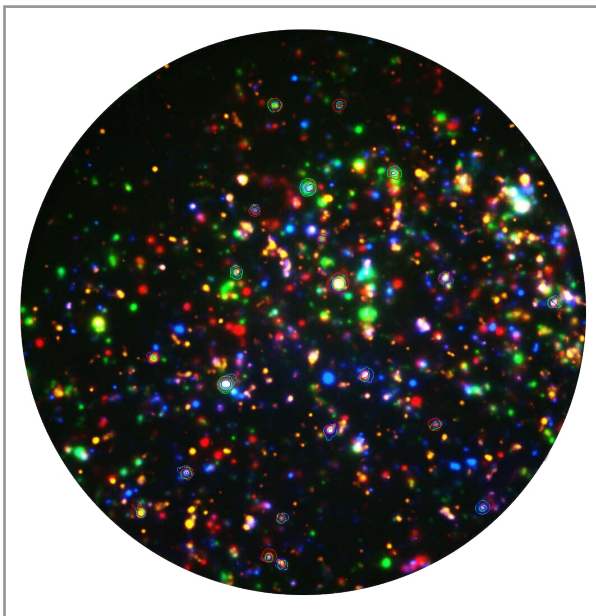


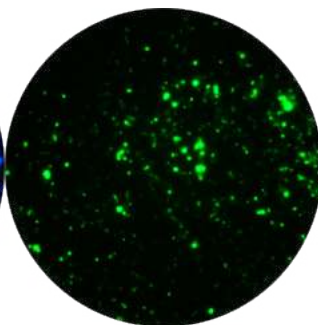
Elevating T Cell Multiplexing to New Heights with Four Color FluoroSpot



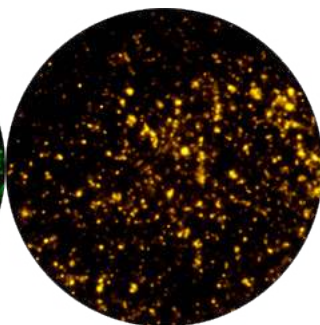
Optimized ELISPOT/FluoroSpot assays can reliably detect antigen-specific T cells even if they occur in frequencies of 0.0001% within PBMC. That's a single analyte-secreting T cell that can be reliably identified within one million bystander cells. To further increase the use of precious cell material, we offer the most comprehensive portfolio of multicolor ELISPOT kits available on the market, including two-, three-, and now the **first-ever four-color T cell kit**. Multiplexing analytes not only helps economize cell utilization but it also enables the detection of polyfunctional T cells.



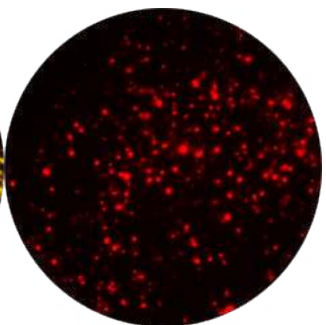
Granzyme B



IFN-γ



TNF-α

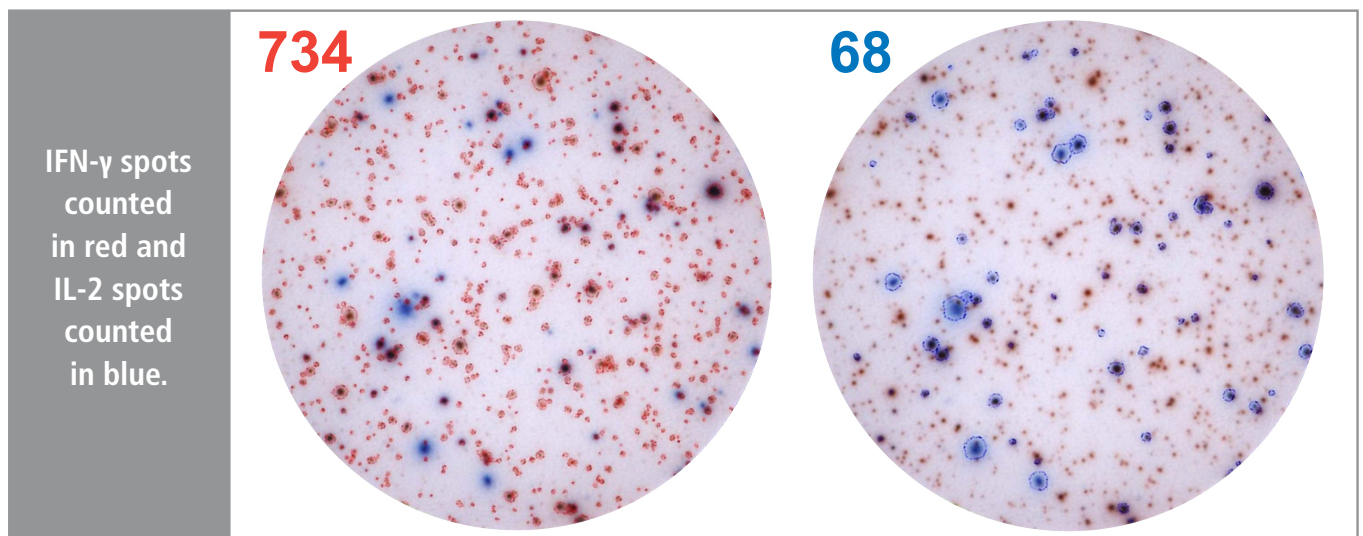
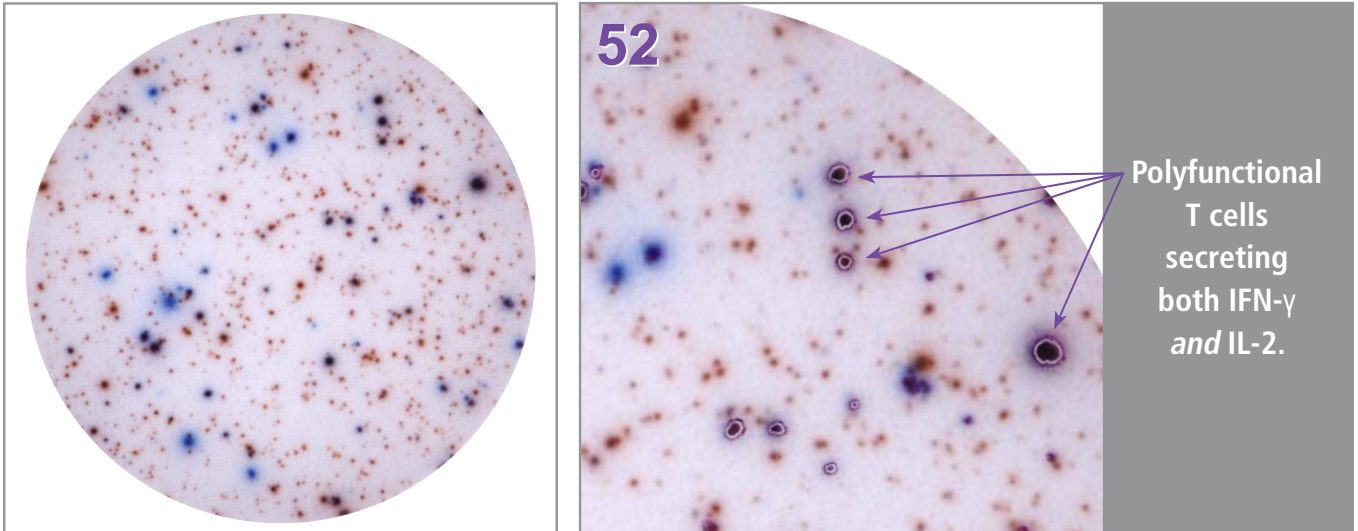


IL-2

The reagents included in the fluorescent ImmunoSpot® Kits have been tailored to shorten and simplify the assay procedure. Kits contain low auto-fluorescent plates, diluents, serum-free media, antibodies, and most importantly, fluorescent conjugates that have separate emission spectrums to easily and accurately detect up to four cytokines. ELISPOT assays have never been faster and easier!

The First Step in Multiplexing: Double-Color Kits

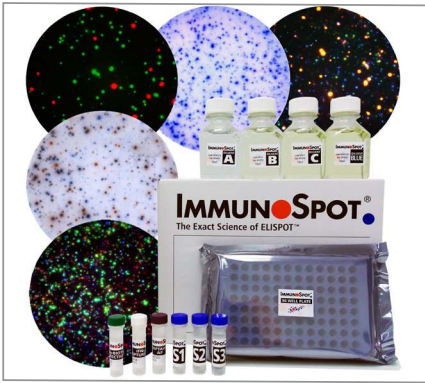
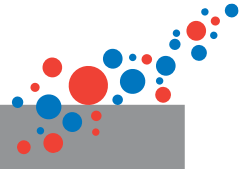
CTL is taking multiplexing of T cell assays even further with the only double-color enzymatic ELISPOT Kit on the market that can reliably and accurately count polyfunctional cells. ELISPOT is known to be able to detect a single secreting cell within a million bystander cells. All ImmunoSpot® Kits, human, non-human primate, mouse, and porcine kits, are quality-controlled to meet this exquisite sensitivity threshold.



ImmunoSpot® Kits were designed to minimize common assay problems associated with unspecific enhancement or suppression. CTL-Test™ Medium is a standardized, serum-free alternative to the lot-to-lot variation experienced with serum-containing media, which is known to interfere with the reliability of test results. ImmunoSpot® Kits can be used in conjunction with ePBMC® Reference Sample QC Sets™ to reduce the intra- and inter-laboratory variability.

Double-Color Enzymatic Kits come with two substrates that precisely resolve the quantity of analyte produced by

each cell, permitting accurate gating and data analysis. The CTL substrate technology prevents overdevelopment, which allows adjacent spots in the most crowded wells to be resolved. This critical component enables fixed development times, avoiding the subjective judgment calls as to the best time to stop the reaction when using common substrates. Most importantly, Double-Color ImmunoSpot® Kits come with two substrates, CTL-TrueBlue™ and CTL-TrueRed™, which are far enough apart on the RGB color spectrum to detect single-color spots as well as double-color polyfunctional spots.



It's ***THE ONLY*** Complete Kit

ImmunoSpot® Kits contain everything needed to reliably detect cell secretions. Every Kit contains CTL Serum-free Media, plates, antibodies, and diluents. Enzymatic ImmunoSpot® Kits have enzymatic conjugates with corresponding substrates that have established development times, and double-color kits have two substrates with RGB color values on opposite ends of the spectrum, all in order to allow optimal analysis of double-secreting cells. Fluorescent ImmunoSpot® Kits have fluorescent conjugates to which the fluorochromes have separate emission spectrums. This allows both single analyte-secreting cells and polyfunctional cells to be easily detected.

SINGLE-COLOR ENZYMATICS KITS & SINGLE-COLOR FLUORESCENT KITS *pre-coated plates available

HUMAN						
IFN-γ*	IL1-β	IL-2*	IL-4*	IL-5	IL-6	IL-10*
IL-12*	IL-13	IL-17	TNF-α*	GzB*	Perforin	
MOUSE						
IFN-γ*	IL-2*	IL-4*	IL-5*	IL-17*	TNF-α	
PORCINE						
IFN-γ						
NHP						
IFN-γ*	IL-2*	IL-6	IL-10*	IL-12*	IL-13	IL-17
TNF-α*	Perforin					

DOUBLE-COLOR ENZYMATICS KITS AND DOUBLE-COLOR FLUORESCENT KITS *pre-coated plates available for fluorescent kits only

HUMAN						
IFN-γ/IL-1β	IFN-γ/IL-2*	IFN-γ/IL-4*	IFN-γ/IL-5	IFN-γ/IL-6	IFN-γ/IL-10*	IFN-γ/IL-12*
IFN-γ/IL-13	IFN-γ/IL-17	IFN-γ/TNF-α*	IFN-γ/GzB*	IFN-γ/Perforin	IL-10/IL-12*	IL-10/IL-17
GzB/Perforin	IL-5/IL-17**, available only as a fluorescent kit					
MOUSE						
IFN-γ/IL-2*	IFN-γ/IL-4*	IFN-γ/IL-5*	IFN-γ/IL-17*	IFN-γ/TNF-α		
NHP						
IFN-γ/IL-2*	IFN-γ/IL-6	IFN-γ/IL-10*	IFN-γ/IL-12*	IFN-γ/IL-13	IFN-γ/IL-17	IFN-γ/TNF-α*
IFN-γ/Perforin	IL-10/IL-12*	IL-10/IL-17				

THREE-COLOR FLUORESCENT KITS *pre-coated plates available

HUMAN						
IFN-γ/TNF-α/IL-2*	IFN-γ/TNF-α/IL-6	IFN-γ/TNF-α/IL-10	IFN-γ/TNF-α/IL-17	IFN-γ/TNF-α/GzB*	IFN-γ/TNF-α/Perforin	IFN-γ/IL-2/GzB
IFN-γ/IL-2/Perforin	IFN-γ/IL-10/IL-4	IFN-γ/IL-10/IL-5	IFN-γ/IL-10/IL-6	IFN-γ/IL-10/IL-12	IFN-γ/IL-10/IL-17	
IFN-γ/GzB/IL-5	IFN-γ/GzB/IL-10	IFN-γ/GzB/IL-17	IFN-γ/GzB/Perforin			
NHP						
IFN-γ/TNF-α/IL-2*	IFN-γ/TNF-α/IL-6	IFN-γ/TNF-α/IL-10	IFN-γ/TNF-α/IL-17	IFN-γ/TNF-α/Perforin	IFN-γ/IL-2/Perforin	IFN-γ/IL-10/IL-6
IFN-γ/IL-10/IL-12	IFN-γ/IL-10/IL-17					

FOUR-COLOR FLUORESCENT KITS

HUMAN						
IFN-γ/IL-2/IL-5/GzB	IFN-γ/IL-2/IL-5/IL-17	IFN-γ/IL-2/TNF-α/GzB	IFN-γ/IL-2/TNF-α/Perforin	IFN-γ/IL-2/GzB/Perforin		
NHP						
IFN-γ/IL-2/TNF-α/Perforin						

CYTOKINE/ANTIBODY FLUORESCENT KITS

HUMAN						
IFN-γ/IgG/IgA	IFN-γ/IgG/IgM	IL-6/IgG/IgA	IL-6/IgG/IgM	IL-10/IgG/IgA	IL-10/IgG/IgM	TNF-α/IgG/IgA
TNF-α/IgG/IgM	GzB/IgG/IgA	GzB/IgG/IgM				
PORCINE						
IFN-γ/IgA						
NHP						
IFN-γ/IgG/IgA	IFN-γ/IgG/IgM	IL-6/IgG/IgA	IL-6/IgG/IgM	IL-6/IgG/IgM	IL-10/IgG/IgM	TNF-α/IgG/IgA
TNF-α/IgG/IgM						

ImmunoSpot® Kits versus the Competition

Features and Benefits	ImmunoSpot®	COMPETITOR 1	COMPETITOR 2	COMPETITOR 3	COMPETITOR 4	COMPETITOR 5
96-well plate option	✓	✓	✓	✓	✓	✓
Strip-plate option	✓	✓				
384-well plate option	✓					
Low auto-fluorescence plate option	✓	✓	✓			
Pre-coated plate option	✓	✓			✓	✓
Serum-free media	✓					
Diluents	✓		✓			
Wash buffer concentrate			✓	✓		
Coating antibody	✓	✓	✓	✓	✓	✓
Detection antibody	✓	✓	✓	✓	✓	✓
Enzymatic or fluorescent conjugate	✓	✓	✓	✓	✓	✓
Single-color substrate	✓	✓	✓	✓	✓	✓
Optimally calibrated substrates for double color enzymatic assays	✓					
No blocking step	✓					
No artificial fluorescent enhancers	✓					
T cell and B cell kit formats	✓	✓	✓			
Single color enzymatic T cell kits	✓	✓	✓	✓		✓
Single color enzymatic B cell kits	✓	✓	✓	✓		✓
Double color enzymatic T cell kits	✓		✓		✓	✓
Double color enzymatic B cell kits	✓		✓			
Single color fluorescent kits	✓					
Double color fluorescent kits (T cell and B cell)	53	27	6	10	9	8
Three color fluorescent kits (T cell and B cell)	49	7	0	0	0	0
Four color fluorescent kits (T cell and B cell)	9	0	0	0	0	0
Characterized PBMC for antigen-specific controls	✓					
Kit developed by same company manufacturing ELISPOT reader	✓					
Scientific and technical support for assay, analyzer, software and kits	✓					

CTL.

Cellular Technology Limited

CTL-Europe GmbH Hans-Boeckler-Str. 19-29, 53225 Bonn, Germany

Telephone: +49 (0) 228 8544 78-0 Fax: +49 (0) 228 8544 78-22

E-mail: ctl-europe@immunospot.eu Web: www.immunospot.eu

